



Brooklyn
Community
Centre

MAY 2026 386

BROOKLYN TATTLER

what's happening in your community



IN THIS ISSUE

From the Community Centre	2-3
Cats Protection Wellington	4
Fuji Mae	5
DIRT	6
Anzac Day Catering Crew Photo	7
Residents' Association	8
What's On	10-11
History with Chris Rabey	12
Anzac Day Wreaths	13
Friends of Central Park	14
Then and Now	15
The BRC Charitable Trust	16
Community Groups	18-19

This month's cover photo is of René Kunz and Freeman Dombroski by the Fuji Mae mural on Cleveland Street. Story on page 5.

Photo credit: Euan Harris

June 2026 copy due no later than 5pm Tuesday 26 May.

Email your contribution to tattler@brooklyncommunitycentre.org.nz

Brooklyn Tattler is published by the Brooklyn Community Association Inc. 18 Harrison Street, Brooklyn. Association members accept no liability for the contents which have been prepared in good faith. Printed by Pivotal.

from the COMMUNITY CENTRE

**BROOKLYN COMMUNITY CENTRE
PHONE 384 6799**

Kia ora, Hello and welcome to the May Brooklyn Tattler.

ANZAC Day in Brooklyn

After the rough weather last month, we were fortunate to have a fine day on 25 April for the Brooklyn ANZAC Day ceremony attracting up to 200 people. One of the highlights was when we gathered after the service in the Community Centre to catch up over morning tea. A big thanks once again to Bev Aspros and her team of volunteers including Justine Berryman, Bronwyn Long, Tania O'Connor, Erin (Bev's daughter) Aspros, Sue Allen, Jeremy Chang and Kala Paul. We asked Bev what the favourite food was on the day and she replied without hesitation, it's cherios! They are gone as soon as they hit the table, followed by the kiwi classic, sausage rolls.

Brooklyn Market

We have our second Community Market for 2026 on Saturday 20 June from 12pm to 4pm. Enquiries are already coming in for stalls. A big thanks to Rob Webb from Newstalk ZB who advertises our markets on their community noticeboard. If you are interested in having a stall, please email us at market@brooklyncommunitycentre.org.nz

Election 2026

Planning is already underway for this year's General Election. Recently Michael Berryman the Electorate Manager for the newly named Wellington Bays ward visited to check us out as a potential voting venue. Thankfully we ticked all the boxes, so once again you will be able to vote at your local Community Centre. And



Penthouse Cinema Café catchup with our Friday Circle Seniors Group during the April School Holidays

even better, you don't have to wait until Saturday 7 November as Advanced Voting will be offered 2 weeks prior from Monday 26 October to Friday 6 November. To help you decide on the best candidate, the Brooklyn Residents' Association have planned a 'Meet the Candidates' evening in the Brooklyn Community Centre hall on Thursday 29 October.

Mitchell Street Play Area refresh/Annual Plan Consultation

You can have a say on the Council's plans to refresh the Mitchell Street Play Area up until 5pm on Sunday 24 May. Please see the advert on page 9 for more details. Consultation is also open on the Council's annual plan for 2026/27. Submissions close on Sunday 10 May at midnight. It's easy to make a submission. Just click on the link below which will take you directly to the WCC website.

<https://www.letstalk.wellington.govt.nz/mahere-tau-annual-plan-202627>

Reader's contributions

A couple of months ago René Kunz the owner of the Fuji Mae martial arts supply shop on Cleveland Street emailed to ask

if we could put an article in the Tattler to celebrate their 20th anniversary in Brooklyn which you can read on page 5. We welcome your contributions, so please email any suggestions or photos to

tattler@brooklyncommunitycentre.org.nz

CONTACT US

Venue Hire and General Enquiries:

Euan Harris

coordinator@brooklyncommunitycentre.org.nz

Childcare Programmes:

Adam Hendry

childcare@brooklyncommunitycentre.org.nz

Accounts:

Jo Henley

accounts@brooklyncommunitycentre.org.nz

Tattler:

tattler@brooklyncommunitycentre.org.nz

Market:

market@brooklyncommunitycentre.org.nz

Main Office: 04 384 6799

Childcare Office: 04 385 0089

STATELY QUEEN SYLVIA

A cat can look at a king, but Sylvia's haughty stare would stop royalty right in its tracks!

Sylvia is a beautiful 6-year-old lady, who was brought to the CPW shelter when her person left Wellington and couldn't take her as well.

Her expression can be a bit severe when she's just met you, as she tends to reserve judgment until you're proved worthy of her trust. Even then, she can be a bit choosy about who she associates with.

However, once she's relaxed, she can be friendly and playful. She's looking for intelligent company and conversation rather than common smooches, and most certainly does not do pickup cuddles or laps.

We would like to see Sylvia find a calm home



as an only cat with one or two grown-ups, where she has access to the outdoors to pursue her bug-hunting hobby. She has a favourite brush and appreciates regular grooms.

Do make an appointment to visit Sylvia if you think she would be a welcome addition to your own estate.

To see all our gorgeous available cats, visit our website here: catsprotectionwellington.org.nz, and follow us on social – we have clips, pictures and stories on Facebook, Instagram and TikTok.

Georgia Valentine Podiatry

Your local podiatrist in Brooklyn

Book appointment with Georgia online at www.gypodiatry.co.nz



Clinic address: 40A McKinley Crescent, Brooklyn, Wellington

Email: gypodiatry@outlook.com

Phone: 021 0874 7649

Level access - Free parking onsite

Services:

- Skin and Nail Care
- Ingrown Toenail Surgery
- Fungal Skin/Nails
- Orthotics
- Footwear
- Injuries/ACC

FUJI MAE CELEBRATES 20 YEARS IN BROOKLYN

Fuji Mae has been described as the best Martial Arts shop in the Southern hemisphere. It is the only shop that specialises in martial arts equipment south of Hamilton and north of Christchurch. In March this year, owner and martial arts enthusiast René Kunz celebrated his shops 20th anniversary on Cleveland Street.

René calls himself a Brooklyn boy. He grew up in the family home on Mitchell Street opposite the War Memorial. René attended St Bernard's School on Taft Street and then St Patrick's College. After finishing his education, René started off in logistics as a runner where he met his partner Trish, and at the young age of 18 bought their family home in Colorado Grove. His first son Jordon was born when René was 21. It was at that age René became involved with martial arts when his flatmate suggested that he come along to a Taekwon-Do evening in Miramar. René stayed with the Miramar Taekwon-Do Club for 33 years, 27 of those were as the Head Instructor of children and adult students.

René's enthusiasm didn't stop at teaching; he went onto represent New Zealand twice in the World Championships winning a gold and two bronze medals in the Men's Team Event which he proudly displays in a cabinet inside Fuji Mae along with other memorabilia. It was while competing overseas at the ITF World champs in Warsaw, Poland, René was introduced to the international Fuji Mae brand whose headquarters are in Barcelona, Spain. Eventually the international owners approached René to establish a Fuji Mae outlet down under. René started out as a

sole trader in 2003 and when the building came up for lease at 52a Cleveland Street in 2006, René didn't hesitate. The location was perfect and the connection to his childhood village of Brooklyn sealed the deal. The building was formerly home to Jenny Spite Interiors. René transformed the site and today over 3000 items of martial arts gear are stocked.

Last year in November, René commissioned Theo Arraj, founder and director of Murals NZ to paint a mural over the side wall of Fuji Mae. The mural depicts a Samurai Warrior that appears calm on the outside but is bubbling over with potential inside. To the right of the mural is the scared Japanese mountain, Mount Fuji, "Man Mirrors the Mountain".

René says that every year Fuji Mae is growing in popularity. Martial Arts Clubs are a close-knit community of like-minded enthusiasts who regularly recommend Fuji Mae as the go to place for martial arts equipment. Much of Fuji Mae's success is due the enthusiasm and knowledge that René and his store manager Freeman Dombroski have for their products.

Clearly for René one of the most enjoyable parts of being involved for so many years in martial arts, has been the 27 years he spent teaching skills to his students and the opportunity to be a positive influence in people's life's. René says the more you put in the more you get out. It's not just about the physical aspect, but about the growth of the person themselves.

Euan Harris



Laura Avenue, Brooklyn

DIRT

DIRT (Disaster Innovation Research and Teaching) is your community resilience group, and we meet regularly to get our neighbourhood better prepared for a significant earthquake, extreme weather, or other disaster scenario.

Our next event on the 24th of May will look at the impact the extreme rain on the 20th of May had on our local area - putting us right in the middle of the sort of event we've been thinking about. It was a chance for us to put preparation into action, help where we could and also learn where we can improve and be better prepared in the future.

We'll also have a film crew with us as we are being included in a documentary about how New Zealanders are getting prepared and building resilience in various ways.

Come and learn in a relaxed and fun way to help make yourself and our community better prepared to face and recover from disruptive events.

Dirt #19 is Sunday 24th May, 4:00–6:00pm at VBC, 93 Mornington Road.

Katie Underwood
THE QUIET ACHIEVER

Liamson/Bonifant Sales Consultants | Leaders Real Estate City Limited (REAA 2008)



“ Would you like to know how much your house is worth? It would be my pleasure to offer you a free appraisal. ”

Contact me on:
m: 027 248 2061
t: 04 894 3717
e: katie.underwood@raywhite.com

THE BROOKLYN ANZAC DAY CATERING CREW



Left to right – Tania O'Connor, Justine Berryman, Bev Aspros, Bronwyn Long and Erin Aspros.



Monthly update on issues and projects involving our community

NEXT MEETING – We invite you to our next meeting which will be our Annual General Meeting on Wednesday 17 June at 7pm

Brooklyn Community Centre, 18 Harrison Street

Come and have your say and please consider contributing your time to advocate for the community, listen and speak

AGM	The Association continues and grows with ongoing contributions and input from the community. We advocate for you. Please come along and have your say. Vote and – ideally – join us.
Horrible storm event	Our thoughts go out to residents of the wider community who have been affected/devastated by the terrible, concentrated weather bomb that struck south Wellington on 19/20 April. And our condolences to the family of the south Karori man who tragically died in the storm.
Bus services and the proposed bus depot on Landfill Rd, Happy Valley	GBRAI facilitated a meeting between residents (including residents from Happy Valley/Owhiro Bay) and Metlink, about the bus depot planned for Landfill Road, to the south of Brooklyn, 3 Metlink officers and a GWRC Councillor presented to the audience. They explained that this will be an ongoing process where they commit to regular and ongoing community consultation. GWRC have secured the land but still need to get expert advice on traffic management issues, environment issues and consents from WCC. Assuming this project goes ahead, it will take some time. GBRAI advocates for “town hall” open meetings rather than smaller “board room” meetings
Landfill issues WCC Southern Landfill and the two privately run landfills in the Landfill Precinct.	WCC Southern Landfill: A decision was made earlier this year to continue the operation of the current land fill (rather than close it this year) as it has between 100 - 150,000 sqm of space still available. It's a logical use of this space for waste / rubbish as it is already consented and it has already taken thousands of tonnes of waste/storm debris from the 19th/20th April severe weather (we will source a total tonnage later) Southern Landfill sewage sludge dewatering plant – we are still awaiting the completion of the Moa Point plant before the one located in the Southern Landfill can close.
Brooklyn Road	WCC has previously said it will repave Brooklyn Road as part of its maintenance schedule. We have now been informed of their intention to chip seal Brooklyn Road, due to budget restrictions. We strongly oppose this as chip seal will break down very quickly due to the thousands of vehicle movements a day on the road.
Battery recycling	To date, GBRAI have collected & recycled: 541 kg of all various battery types. The most numerous are: 1) 283 kg of AA batteries; 2) 84 kg of AAA batteries; 3) 35 kg of C batteries; 4) 41kg of D batteries and balance made up of 6V, 9V, 12V, 18V, button batteries and computer batteries.

Email us your ideas, queries or concerns, please contact us at:

brooklynresidentswellington@gmail.com - www.facebook.com/brooklynresidentswellington



Option 1



Option 2

Mitchell Street Play Area refresh

We'd like to hear your thoughts about our concept plans for the Mitchell Street Play Area refresh.

To find out more and have your say, go to letstalk.wellington.govt.nz/mitchell-street-play-area-renewal or scan the QR code.



**Submissions open
18 April to 5pm, 24 May.**

**Absolutely Positively
Wellington City Council**
Me Heke Ki Pōneke

what's on at your BROOKLYN COMMUNITY CENTRE

18 Harrison Street

WEEKDAYS

**BEFORE SCHOOL
AFTER SCHOOL
HOLIDAY**

**CHILDCARE
PROGRAMMES**

Contact Adam Hendry, Childcare Programme Manager. Phone 385 0089 or email childcare@brooklyncommunitycentre.org.nz.

9 AM PILATES

Contact Faye Tohbyn on 022 054 2369 or fayetohbyn@gmail.com

10:30 - 11:30 AM FELDENKRAIS

Improve your movement, posture & breathing. Contact Toni McWhinnie on 021 1782056 or email temcwhinnie@gmail.com

6 - 7:30 PM BROWNIES

Contact Margaret 389 3028 or email marrexj@gmail.com

**9 AM - 12 PM TABLE
TENNIS**

Open to all ages and ability. Tables, bats and balls provided. Contact Philip on 021 230 4083 or email: codwgpdl@gmail.com

**9 - 10:30 AM EARLY
CHILDHOOD
MUSIC**

For Tamariki aged 0 - 3 and their whanau. Contact Ahna Jensen on 027 775 8534 or email: ahnasmusicstudio@outlook.com

**6 - 8:30 PM ST JOHN
YOUTH**

Penguins: 6 - 7pm. Cadets: 7 - 8:30pm. Contact Ross Young on 021 264 0440 or email ross.young@stjohn.org.nz

10 - 11 AM FELDENKRAIS

Contact Toni McWhinnie on 021 1782056 or email temcwhinnie@gmail.com

4:30 - 6 PM KARATE

Grasshopper Karate to Advanced Karate classes. Book your free trial class. Contact Sensei Patricia at www.familyfitkarate.co.nz/contact or 027 297 6049.

6:15 - 7:15 PM ZUMBA

Zumba is a dance fitness class set to Latin and World rhythms - it's exercise in disguise! Contact Angelica on 027 267 0999 or email zumba@angelicawoolley.com

MONDAY

TUESDAY

WEDNESDAY

WEDNESDAY

THURSDAY

FRIDAY

SATURDAY

SUNDAY

**8 PM TABLE
TENNIS**

Inquiries Philip on 021 230 4083 or email: codwgpdl@gmail.com

**10 AM - 12 PM CRAFT
CONNECTIONS**

Fortnightly crafters social group. Contact Louise email: louisebrockway.nz@gmail.com

5 - 6:30 PM KARATE

Beginners' to Advanced Karate classes. Contact Sensei Patricia at www.familyfitkarate.co.nz/contact or 027 297 6049.

6:30 - 7:30 PM TAI CHI

Contact Ferne on 389 1433 or email: ferne.david@xtra.co.nz

**6:40 - 7:10 PM CARDIO &
CORE**

A half hour strength workout for busy people like you! Contact Patricia on 027 297 6049.

9 AM PILATES

Contact Faye Tohbyn on 022 054 2369 or email: fayetohbyn@gmail.com

**11 AM - 2 PM FRIDAY
CIRCLE**

Seniors Social Group, meets weekly for light lunch and activities. Contact Euan Harris, details at bottom of page

10:30 - 11:45 AM YOGA

Koha Yoga classes with Maria Bergvall. People of all ages and abilities welcome. BYO yoga mat. Contact Maria for more information on 020 477 5190.

**9:15 AM ST MATTHEW'S
CHURCH**

Our one hour service starts in the hall at 9:30am. Contact Rev. Scottie Reeve at scottie.reeve@gmail.com View online www.stmattsbrooklyn.org.nz

**10:30 AM EKKAALLAM
CHURCH**

Tamil Christian worship and service. Contact Robert tec.wgtn@gmail.com or 027 858 9916

3:45 - 6:45 PM KARATE

Grasshopper Karate to Advanced Karate classes. Contact Sensei Patricia at www.familyfitkarate.co.nz/contact or 027 297 6049.

To book Brooklyn Community Centre for classes, groups or events contact Euan Harris on 384 6799 or coordinator@brooklyncommunitycentre.org.nz

WHAT I KNEW 50 YEARS AGO

Growing up in the 1950's and 60's was a wonderful time. No TV, no computers, no mobile phones, very few cars, and a lot of our grocery items being delivered to the door at home; life was bliss.

Unlike today's situation at primary schools where parents often drop and pick up their children to and from school, I was taken to Brooklyn School on my first two days, first day walking, second day by bus, then mum said to me do I know the route, which I said yes, so I walked or bussed every day after.

After school was precious. I played with my neighbouring school buddies, we had all sorts of games, hide-and-seek, tag, jumping over things, etc.

But the best of all, was, we had a big old oak tree nearby, and me and a mate would climb on to a low branch and sit there for ages just chatting about anything. Though we never had a watch or anything, we always knew when it was time to go home for tea. After tea, I would play in my room, while our parents would either read a book, listen to the radio, or play cards.

Dad used to give me pocket money every so often, no more than a bob (10 cents), which was a lot of money for a child, then. I would, on occasions take a stroll down to the shops in Brooklyn, and get a packet of aniseed balls (5 for a penny), spearmint leaves, eskimos, sherbert, sniffers, and who

remembers the little pink lollies called smokers? There were even liquorice cigarettes with a candy tip painted red at the end which resembled a real fag! Gobstoppers were another favourite, and toffee apples when we went to a fair at the Winter Show Buildings.

A highlight for me was Mum's weekly trip to the Brooklyn shops for groceries, and on occasions taking me with her. While I don't remember much about the retailers themselves, what I do recall is the shop smells. Pickett's the grocer, on the Ohiro/Cleveland corner, had the most delightful smell of spices, flour and sugar, and fresh foods. In those days, everything was bulk delivered in big sacks, and the grocer would scoop out the commodity to put into paper bags for sale. Even on a hot summer's day, Pickett's was always cool and airy. The butcher had a smell of half wood, half meat. The floor always had a thick layer of sawdust as meat was sold very fresh with blood still dripping off.

Faulkner's Cake Kitchen was the best of all, with the delicious smell of fresh bread and cakes wafting as you went in. George Faulkner glazed the crusts of his fruit loaves making them shiny and sticky. We children used to get lunches here, on the rare occasion mum gave us some money to buy our lunch instead of bringing it to school. I even remember getting sixpence worth of fish and chips from the fish shop, with a big piece of fish and piles of chips.

Ah the days to remember

Chris Rabey

BROOKLYN ANZAC DAY LAYING OF WREATHS



At Brooklyn School, Washington Avenue



At Brooklyn War Memorial, Sugarloaf Hill



Areas where the arborists are working are clearly signposted. Look after your precious selves and the people you roam with. Soon they will be no more and hopefully we'll have unrestricted and safe access to the park.

In good news, the broken bridge along Moturoa Stream is restored in all its curvy glory. Bring on the sun and a reprieve from heavy rain, at least for a while, so we can get into the park and enjoy it!

If you feel like some park time, come to our next working bee. Bring your own gloves if you have them, and a mug. We supply delicious Supreme coffee and baking.

Next working bee: Sunday 31 May 10.00 am – 12.30 pm.

Check <https://www.meetup.com/upstream/> for confirmation.

Contact Lynne at all.whites@xtra.co.nz

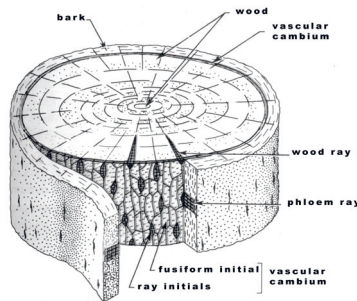
Floods

What a week. Our thoughts go out to everyone affected by the rains of 20 April. Heeding the Council's warning about increased risk of slips after our soaking, this month Upstream focused on the edges of the park. We're preparing areas on the Western side of the park for planting. That means removing the invasive honeysuckle, (mostly) dead from spraying, and clearing around previous plantings.

The park is full of secret paths and clearings. Last weekend we also cleared around somebody's campsite. It would be a fine place to lay down and observe the stars through the trees (however illegal it is to camp in the town belt.)

The Council's arborists have been busy removing some of the dangerous trees. You might have noticed the crazy leans on some of the legacy pines and gums. Until the dangerous trees have been felled, do take care in the park.

TREE DOCTORS



LIVING PLANET

021 064 2306 04 971 8583

Hugh Underhill

livingplanet.co.nz



The top photo was taken in 1978 of 1 Todman Street when it was the address of Brooklyn Same Day Dry Cleaning, with the promise of a '2 Hour Service'. Over the years this iconic Brooklyn building has been tastefully upgraded and is now home to the Salty Piggin Bar & Bistro Restaurant.

Top photo credit: Charles Fearnley, source; Wellington City Libraries Ref: 50003-1024



brooklynresourcecentre@gmail.com

The BRC Charitable Trust met in the middle of last month to allocate grants for its first funding round of 2026. While Trustees would like to respond affirmatively to all grant applications, more requests for funding were received than the allocation available this cycle. As a result, some applications were turned down or partially funded.

We are pleased to announce the following groups/organisations received funding:

Brooklyn Community Association - To put

towards Friday Circle Senior Group costs

Brooklyn Northern United JFC - To purchase Cricket gear: shirts, balls, gloves

Brooklyn School (Year 7/8) - Entry/umpire fees for AIMS Games

Capital Montessori School (Kingston) - To put towards lockers

Two Todman - To put towards staging - Brooklyn Twilight Festival (Nov 26)

The second funding round of 2026 will occur in four months' time. Applications open 1st September and close 30 September. Any not-for-profit community organisation, group or incorporated charity that provides an activity, programme or service for the benefit of people in the wider Brooklyn area can apply (with a maximum funding of \$5,000 for each project).

The BRC Charitable Trust

Kōtare Gardening

- Lawn mowing
- Garden maintenance
- Sections cleared or tidied
- Hedges trimmed
- Weeding



For a free quote call Michael on **0274172733** or email michaelmckenzie1971@gmail.com

Brooklyn and surrounding suburbs

CARPETECH

CARPET MAINTENANCE

	carpet repairs
	pet damage
	ripples removed
	stains patched
	free quotes

BROOKLYN

(04) 385 4085 carpetech@me.com
021 434 232 www.carpetech.co.nz

COMPOSTING

NEW HUB OPEN IN ARO VALLEY

- 1 Subscribe for \$5.20/week
- 2 Receive padlock code
- 3 Drop off your food scraps weekly



We take care of the rest:

Our staff are paid the Living Wage to collect & process your food scraps by hand & turn it into compost to grow nutritious kai, at our urban farm in Newtown, that we donate to the Compassion Soup Kitchen & Newtown Community Centre - continuing the kai cycle.

Take local climate action
Give your scraps another life
Grow food, not landfills!

Find out more: kaicycle.org.nz/for-residents

Email us to sign up: compost@kaicycle.org.nz

Hub location: Aro Valley Community Centre



BROOKLYN BROWNIES, GUIDES AND PIPPINS

Pippins (5-7 years) brooklynpipkins@outlook.com
Brownies (7-9.5 years) brooklyn.brownies@gmail.com Guides (9-12.5 years) brooklynguides@gmail.com or visit <https://girlguidingnz.org.nz/>

BROOKLYN FOOD GROUP

Local food and community. Working bees held on the 1st & 3rd Sundays of the month from 3pm at the Brooklyn Orchard on Harrison Street. thebrooklynfoodgroup@gmail.com or www.facebook.com/BrooklynFoodGroupNZ

BROOKLYN GARDEN CLUB

Meets 1st Wednesday 7:30pm from March to October. New members and visitors welcome. Contact Kathleen Skudder on 027 650 9108 or email: kathleen.skudder@gmail.com

GECKOS HOCKEY CLUB

Come and play hockey with us. Years 1-8 during winter terms Wednesdays from 4:15-5:30pm indoor at the Chinese Cultural and Sports Centre near the National Hockey Stadium. Just turn up on practice day. <http://brooklyngeckoshockey.weebly.com> or facebook.com/geckoshockeyclub/

LIGHTHOUSE CHURCH

Sundays 11am-12:30pm Ridgway School Hall, 120 Mornington Road. Contact Avia 021 1096457. Email: aavia123@gmail.com Find us on Facebook.

BROOKLYN LOCAL HISTORY GROUP

Next meeting on Saturday 30 May from 2 - 4pm at Brooklyn Library. We'd love your input or queries. Please contact the convenor in case our advertised date or venue changes. Sharon Macintyre 0276344455 sharonmacintyre42@gmail.com

BROOKLYN MAINLY MUSIC

Fun affordable 30 minutes, for parents or care givers to enjoy with their pre-schooler(s). Morning Tea provided. We meet Wednesdays at 10am during school terms. *Wellington Reformed Church* 34 Harrison St. Maria 022 187 9030

BROOKLYN NORTHERN UNITED JUNIOR FOOTBALL CLUB

First Kicks enrolments for girls and boys aged 5 and 6 open throughout the season. Email enquiries to info@bnujfc.co.nz or register online at www.bnujfc.co.nz/registration

BROOKLYN PLAYGROUP

Fun group for parents & caregivers with preschool children. Meets Tuesdays and Thursdays 9:30-11:30am during the school term at the Korean Church - 184 Ohio Road. Turn up on the day.

BROOKLYN SCOUTS

Scout Hall, Harrison St. Scouting is for boys and girls who love adventure. Keas 5-7 yrs, Cubs 7-11yrs,

Scouts 11-14yrs, Venturers 14-18yrs. Financial Support available. Find out more at www.brooklynscouts.org.nz or contact John Morrison on membership@brooklynscouts.org.nz

BROOKLYN SMALLBORE RIFLE CLUB

Ages 14+ Sundays 6pm-8pm mid-March to early October at the Royal Tiger Range, 131 Russell Terrace, Newtown. All equipment provided. To join email: bsrc.club.captain@gmail.com www.bsrc.org.nz

BROOKLYN TABLE TENNIS

9am-12pm Tuesdays and 8pm Wednesdays at Brooklyn Community Centre. We welcome new members of all ages and ability. Tables, bats and balls provided. Phone Philip on 021 230 4083.

BROOKLYN TOY LIBRARY

The Toy Library is based in the Vogelhorn Precinct at 93 Mornington Road. We have a fantastic range of toys for children aged 0-7 years available to hire. Find us on Facebook or visit our website: brooklyntoylibrary.org.nz

BROOKLYN WALKERS

Meet Monday mornings (except public holidays) outside Brooklyn Library. Phone Deborah 934 2238 or Lindy 027 356 5037.

11 May – Southgate walk. Mt Albert to Zoo. Catch 9:34am No. 29 bus from

Brooklyn Library.

18 May – Newlands & Woodbridge walk. Catch 9:43am No.52 bus from Wellington Railway Station.

25 May – Kilbirnie to City via Hataitai & Roseneath. Start at 10am from Kilbirnie Bus Hub.

1st June – King's Birthday holiday.

8 June – Cannons Creek walk. Catch 9:33am train to Porirua, then 10:04am No.220 bus.

BROOKLYN CRICKET CLUBS

Tanera Park off Tanera Cres. Junior Age 4 + www.bjcc.co.nz Senior 1 Day, T20, Vintage www.brooklyncricketclub.com

FRIENDS OF OWHIRO STREAM

Working bees on the second Saturday of the month 10am-12:30pm. Contact Martin on 389 8995 or email: owhirostream@gmail.com

PREDATOR FREE BROOKLYN

Hello Kaka, goodbye rats! We're looking for volunteers to host traps on their properties. If you'd like to help email predatorfreebrooklyn@gmail.com

RATA PLAYGROUP

Calm and nurturing place for babies and toddlers 0-3 years to explore, learn and socialise with a parent or family member. Morning sessions available at Capital Montessori, Camrose Grove, Kingston.

montessori.school.nz/playgroup or email rata@montessori.school.nz

THE KUNG FU SCHOOL

Learn Shaolin Kung Fu for self defense and functional fitness. Wellington Swords Club Building, 2 Tanera Crescent, Brooklyn.

Contact Rob Young on 021 408 521 or wellington@shaolinkungfu.co.nz www.shaolinkungfu.co.nz

ST JOHN PENGUIN AND YOUTH DIVISION

Penguin Program 6-8 yrs. Karen Don 027 404 6343 Youth Division 8-18 yrs. Ross Young 021 264 0440 www.stjohn.org.nz

TURBINE TALKERS TOASTMASTERS CLUB

Your local chapter of Toastmasters International. Tuesdays 7:15pm-9:15pm fortnightly at the Reformed Church on Harrison St. Bridget 0211 379 656, Sylvie 022 197 3610 turbine@toastmasters.org.nz <http://6879.toastmastersclubs.org>

UPSTREAM – FRIENDS OF CENTRAL PARK

Working Bees from 10am-12:30pm on the last Sunday of the month. Contact Lynne White at all.whites@xtra.co.nz Come along for great conversations, meet new people, delicious morning tea and contribute to the care of Central Park.

VOGELMORN TENNIS CLUB

Vogelmorntennisclub.com Fun exercise for all abilities. Give tennis a go at the best little tennis club in NZ. Club days, competition and coaching available. Call in or email secretarylvtc@gmail.com

BROOKLYN SAYGO

Steady As You Go exercise classes Tuesdays at Vogelhorn Hall from 1pm - 1:50pm. Improve your strength, balance, help prevent falls and meet new people. Koha payment (suggested \$3) To join just turn up before 1pm. More info at acwellington.org.nz/events

BROOKLYN PLAYCENTRE

22 Harrison Street Ages 0 - 6 years Mon to Thurs 9am - 12:30pm. Contact brooklynplaycentre.org.nz or call 385 6531.

CRAFTING THREADS OF AROHA

Community knitting group meets in the Penthouse Cafe at 11am on the last Saturday of the month. Contact Katherine on 021 203 0022 or ka.harris25@gmail.com.

PRESCHOOL MUSIC GROUP

The Little Music Crew - Fridays from 10am during school terms. Join us for waiata, poi, actions and rhymes at Vogelhorn 93 Mornington Road. Voluntary Koha. Contact Heather at hdrysdalenz@gmail.com

PIVOTAL
— CREATE • PRINT • DELIVER —



Award-winning print specialists for your advertising, packaging & publishing needs.

PRINT • LABELS • CUSTOM-CUTTING • PACKAGING • DESIGN

www.pivotalprint.co.nz