



Brooklyn
Community
Centre



BROOKLYN TATTLER

what's happening in your community



IN THIS ISSUE

From the Community Centre	2-3
From the Councillor	4
Residents' Association	5
Friends of Central Park	6
From the Library	7
Interior Decorating Workshop	8
Brooklyn Playcentre	9
Community Health and Wellness	10
Then and Now	11
What's On	12-13
Two Todman	14
Recycling Station	15
Friends of Owhiro Stream	16
Cats Protection Wellington	17
BRC Charitable Trust	18
BNUJFC	19
Vogelmorn Precinct	20
History	21
Community Groups	22-23

This month's cover photo features representatives from Taranaki Whānui and Atiawa with Mayor Tory Whanau, Deputy Mayor Laurie Foon and Councillor Nureddin Abdurabman at the dawn blessing of the Arabeke Housing Complex at 30 Harrison Street on 3rd March.

Photo credit: Neil Price

April 2023 copy due no later than 5pm Tuesday 28 March

Email your contribution to tattler@brooklyncommunitycentre.org.nz

Brooklyn Tattler is published by the Brooklyn Community Association Inc. 18 Harrison Street, Brooklyn. Association members accept no liability for the contents which have been prepared in good faith. Printed by Pivotal.

from the COMMUNITY CENTRE

**BROOKLYN COMMUNITY CENTRE
PHONE 384 6799**

Hello and welcome to the first home delivered edition of the Brooklyn Tattler for 2023. The Tattler is produced each month by the Brooklyn Community Association who run the Brooklyn Community Centre in Harrison Street. Twice a year, we deliver the Tattler to homes in the greater Brooklyn area. Every month you will find Tattlers at the community centre; the library; Penthouse Cinema; and local businesses. The Tattler is also available online. Our thanks go to Brooklyn Scouts for delivering the Tattler this month.

We are back in the swing of things after the summer break with all our regular groups and activities having restarted. Check out the centre pages for a comprehensive listing of what is currently on offer here. Our Before School Care and After School Care services are also up and running; welcome back to our existing families and a warm welcome to our new families that have joined us this term.

Neighbours' Day Aotearoa 2023

Neighbours Day Aotearoa is a nationwide event held annually to

encourage people to get to know their neighbours better. This year's theme is Let's Share and runs from 1 – 31 March. Go to <https://www.neighboursday.org.nz/> for details.

Market

To coincide with Neighbours' Day, our next community market is on Saturday 18 March from 12pm – 4pm and is a great opportunity to come and connect with your neighbours. We have some exciting new stallholders booked in alongside some regular favourites. There are still a few stalls available so contact us now if you would like to book one.

Friday Circle

Our weekly seniors group is going strong but we are always eager to see new faces. If you, or someone you know, would like a few hours company on a Friday between the hours of 11am and 2pm, pop in and see us or give us a call. Tea and biscuits is offered on arrival with a light lunch available for \$5.00 at 12pm. Most weeks we have a guest speaker and there is also the opportunity to join in – or not! – with some gentle exercises.

Recycling Station

We are excited to have set up a mini recycling station here at the Community Centre now to add to our liquid paper board (e.g. Tetra Pak) and battery recycling. Small items that are able to be dropped off to the Sustainability Trust are now also

able to be dropped here. We would like to thank local Brooklyn resident Luke Ross for his help and support in setting this up. See page 15 for more details.

Anzac Day

We are all set to host Anzac Day here at the Community Centre on 25 April which this year falls on a Tuesday. We need volunteers to help out in the kitchen on the day so if you are available, please contact us here at the Centre.

Have a great month.

Julie and Euan

CONTACT US

Hall Hire and General Enquiries:

coordinator@brooklyncommunitycentre.org.nz

Childcare Programmes:

childcare@brooklyncommunitycentre.org.nz

Accounts:

accounts@brooklyncommunitycentre.org.nz

Manager:

manager@brooklyncommunitycentre.org.nz

Tattler:

tattler@brooklyncommunitycentre.org.nz

Market:

market@brooklyncommunitycentre.org.nz

Main Office: 04 384 6799

Childcare Office: 04 385 0089



NUREDDIN ABDURAHMAN, WELLINGTON CITY COUNCILLOR PAEKAWAKAWA / SOUTHERN WARD 021392487 NUREDDIN.ABDURAHMAN@WCC.GOV.T.NZ

DEPUTY MAYOR LAURIE FOON PAEKAWAKAWA / SOUTHERN WARD LAURIE.FOON@WCC.GOV.T.NZ

from the
COUNCILLORS



Kia Ora Greater Brooklyn Residents

Warm greetings to you as we settle back into the routines of this new year.

We want to start by acknowledging those who have lost so much in the aftermath of Cyclone Gabrielle. Wellington has been matched with the town of Wairoa for the adopt a community campaign. If you can donate, please help through this fund. While we are thankful that Wellington has not been impacted, it's an important reminder to refresh our emergency management plans as individuals, whanau, neighbourhoods, and communities.

We ask you to check into the Wellington Region Emergency Management Office (WREMO) website to prepare you and your whanau for any civil emergency. If there is an emergency, check on your own family first, then your neighbours, then head to your community emergency hub, which is Brooklyn School. But please be assured that Council and WREMO remain in a constant state of emergency preparedness.

We know how important our open spaces and recreational facilities are to support Wellingtonians to live well, connect to nature and each other. We will soon have a new strategy Te Whai Oranga Pōneke, the Open Space and Recreation Strategy out for consultation and we are keen to hear your

feedback. These are all spaces and places that make living in our city special, and we must do our best to look after them for now and generations to come.

We are also excited to join you in welcoming new whanau into the new homes in Harrison Street. We will be celebrating this with a blessing by mana whenua and look forward to sharing your beautiful village, green spaces, and daily activities alongside them.

Ngā mihi nui

Deputy Mayor Laurie Foon and Cr. Nureddin Abdurahman

THE
VOGELMORN
FOUNDATION

Visit us at
www.tvf.org.nz

The Vogelhorn Foundation has commenced distributing funds to local organisations and individuals.



For more information or to apply for funding please visit our website. Applications MUST be made online.

PO Box 14-330, Kilbirnie
Wellington, 6022
admin@tvf.org.nz

BROOKLYN
RESIDENTS ASSOCIATION INC.



brooklynresidentswellington@gmail.com
www.facebook.com/brooklynresidentswellington

Monthly update on issues and projects involving our community

NEXT MEETING – Tuesday 21 March 2023 at 7:30 pm Brooklyn Community Centre, 18 Harrison Street - Come and have your say	
Any Local Issues?	Let us know if there's local topics you'd like to see addressed. We are here for our local residents.
Brooklyn Temporary Cycleway	WCC have informed the community of its intention to make the current cycleway permanent. This will involve safety improvements. GBRAI and the business community will have some limited input in this and we are looking to get more information on what is planned.
Water Leaks and Wellington Water	Wellington Water have acknowledged the number of small, medium and large water leaks in Brooklyn and wider Wellington. Their website is showing the total number of fixed leaks since July 2022 = 5064 (Wgtn =2081 of those). Total leaks outstanding = 2934 (Wgtn = 1350 of those). So, a lot done and a lot more to do. https://www.wellingtonwater.co.nz/resources/topic/drinking-water/water-treatment-plants-2/leaks/leak-stats
Landfill Precinct – Council Run Careys Gulley	WCC has allocated \$36M for SLEPO (Southern Landfill Extension Piggy Back Option) to go ahead and to be operational by 2026. https://wellington.govt.nz/news-and-events/news-and-information/our-wellington/2023/02/slepo-and-zero-waste
Landfill Precinct – C & D Landfill	C&D Landfill (building waste) in negotiations between WCC and a new private operator.
Landfill Precinct – T & T Landfill	T and T Landfill is expected to seek an extension to its Resource Consent (which expires in 2026). The expectation is that this will be granted.
Road Works / Chip Sealing	There are ongoing road works (work done by WCC/Fulton Hogan) on Karepa Street (laying chip seal) and Ohiro Road (between Brooklyn village and Happy Valley). Another week or so worth of work.
Multi-Unit Dwellings	Townhouse development at 96 Washington Avenue now being sold, Cleveland Street development paused, Taft Street development paused. St Bernard's old church site in Taft St – notified consent for 11 townhouses lodged with WCC.;
WCC Social Housing / now a Community Trust	WCC's Build Wellington / now a Community Trust. Harrison Street social housing redevelopment is complete. After GBRAI request, WCC have agreed to have an opportunity to view them with an Open Day Saturday 11 March.
Email us your ideas, queries or concerns, or to sign up to our newsletter at: brooklynresidentswellington@gmail.com	



your jeans with a grimy layer of soil and pick dirt from your fingernails. It's all very real and earthy. But above all, it's satisfying to see the difference a dozen or so people can make working together, even for a short period of time. We know we'll need to do another pass to give the seedlings a fighting chance. But when they're grown the plants will provide their own defence against invasive weeds. That's what we're working towards.

Come and join the skirmish at our next working bee. Bring your own mug – we supply drinks and baking.

Next working bee 26 March 2023 – Last Sunday of the month between 10am – 12.30pm

Check <https://www.meetup.com/upstream/> for confirmation of working bees.

Contact Lynne at all.whites@xtra.co.nz
Everyone welcome!

The thing about weeds is that you have to admire them. It's their tenacity, their cunning survival strategies, their seemingly endless appetite for life. On the downside – well, they're weeds. And some must come out if they're not to bully other plants out of existence. So, our last working bee found us at the Washington Ave entrance to Central Park, pitting our strength against our old frenemies climbing dock, tradescantia, and others. Take dock, for instance. It has a cool botanical name, Rumex Sagittatus, worthy of a baddie in the Marvel franchise. And true to that genre, you can behead it, dig it out, burn it, and herbicide it – and it can still come back if there's fraction left in the soil.

We need to accept that often the weeds will win. As one person commented, "I sometimes wonder why we bother. In a month, they'll all be back." There's a lesson in that. No weeds, no reason to work together. No opportunity to accessorise

"How can such small movements make such a big difference?"

Help yourself:
Learn to move with more ease, balance and power

Feldenkrais® classes in Brooklyn

Mondays 10.30 am

Wednesdays 10 am

at the Brooklyn Community Centre

For more details contact Toni:
temcwhinnie@gmail.com or 021 178 2056

Individual lessons are also available

See also www.feldenkrais.org.nz

from the LIBRARY

WHAT'S HAPPENING AT BROOKLYN LIBRARY

PRE-SCHOOL STORYTIME AT BROOKLYN LIBRARY

Pre-School Storytime has returned to Brooklyn Library. No need to book - this is a drop-in activity recommended for children aged from two to four years with their caregivers. This is a fun and interactive event with stories, songs, and rhymes to inspire your pre-schooler and grow a love of literacy. Through stories and play, children learn how to express themselves and understand the world around them.

Storytime takes place between 10.30am – 11am on Thursday mornings at Brooklyn Library.

PRINTING, SCANNING AND PHOTOCOPYING

Brooklyn Library has a fully accessible printer,



and our friendly staff will help you with any task you may have.

HOW MUCH DOES IT COST?

Black & white A4 – 10 free sides of printing, then 20c per extra side (double-sided printing/ photocopying is charged as two-sides).

Black & white A3 – 40c per side

Colour A4 - \$1.50 per side

Colour A3 - \$3.00 per side

Scanning is free!

Katie Underwood

THE QUIET ACHIEVER

Licensed Business Sales Consultant | Lecturer at Eastern Chrysalis (REAAZ 2008)



“Would you like to know how much your house is worth? It would be my pleasure to offer you a free appraisal.”

Contact me on:
m: 027 248 2061
t: 04 894 3717
e: katie.underwood@raywhite.com

INTERIOR DECORATING WORKSHOP

Transform your home into one you love!

If you know what you like, but don't know how to pull it together yourself, or you simply lack the clarity, motivation or inspiration to make decorating changes in your home, then this fun and inspiring one-day workshop is for you! This is an interior decorating workshop for "non-designers". Discover your unique style; even if you don't think you have one. Figure out what else is needed to create a home interior you'll love. Explore and develop your decorating ideas in a fun, relaxed and supportive group of like-minded home decorators. Gain the knowledge, clarity and tools to confidently create a home you're proud of.

Local Brooklyn interior designer Nicci Tong from Homes with Soul, has been helping her clients transform their homes since 2003, combining existing furniture with new pieces to create personal and unique home interiors. Nicci has run workshops and seminars in the past and is excited to be pairing up with interior

designer Karen Candy from Kcandy & Co, to launch this brand-new offering. Karen is an established interior designer and Dulux colour expert from Auckland who knows everything there is to know about colour. Together, they're a powerful combination – ready to help you love the home you're in!

Seize the opportunity to spend a day with these two design industry professionals, and leave with a plan, feeling inspired, motivated, armed and ready to implement your inspiring new look! If you've made a start with your decorating and feel stuck about what to do next, bring along your decorating ideas and inspiration, and get the support you need to move forward.

**Friday 31 March or Saturday 01 April 2023.
9.30am - 4.00pm**

Two Todman Neighbours' Place, Brooklyn.

Numbers are strictly limited to ensure all attendees receive individual attention. For more information and to book your spot, visit www.homeswithsoul.co.nz/decoratingworkshop

LOVE THE HOME YOU'RE IN!
A one-day decorating workshop for 'non-designers'



DECORATING WORKSHOP!

FRIDAY 31 MARCH OR SATURDAY 01 APRIL 2023
TWO TODMAN NEIGHBOURS' PLACE, BROOKLYN, 9.30AM - 4.00PM

Numbers are strictly limited - For details, and to book your spot, visit WWW.HOMESWITHSOUL.CO.NZ/DECORATINGWORKSHOP



OPEN DAY AT BROOKLYN PLAYCENTRE



Brooklyn Playcentre is excited to be hosting an open day in conjunction with the Brooklyn Community Market on Sat 18 March from 12pm to 4pm. We are inviting whānau with tamariki aged 0-6 years to come and see for themselves what Playcentre is all about.

Playcentre is an Early Childhood Education provider with a difference; it is the parents and whānau who care for the children attending. When you visit, you and your pre-schoolers will be able to enjoy some of the rich play and learning experiences that we have on offer. Our back gate will be open (access through Community Centre playground) so please feel free to come and visit.

The activities on offer will include water play, sandpit, messy play, bubbles, and so much more. Come over and see for yourself, there is something for everyone!

Our members have all joined and stayed with Playcentre for various reasons -

"Our Playcentre day is our favourite day of the week - my child gets free reign in a safe and fun environment, I get to hang out with my friends and none of the mess has to come home. It is so much more than I imagined when I joined." Lucie

"It's awesome to have a space to come to, which me, my two year-old and ten month baby are all so comfortable and well catered for. There is something for all of us at Playcentre and it's a privilege to be part of a community of such supportive and kind families!" Amanda

"I found my community here. My Playcentre friends have helped me through the rollercoaster that is life with pre-schoolers." Sheila

Brooklyn Community Market is on Saturday 18 March, 12-4pm. If you cannot visit then, please feel welcome to visit any time. Call us on 04 385 6531 or pop into 22 Harrison Street.



COMMUNITY HEALTH AND WELLNESS DAY

Sunday April 30 10am - 4pm at Ridgeway Hall, 117 Ridgeway Road, Mornington

A group of professionals, including experienced natural health practitioners, and practitioners with nursing experience, who live in the Brooklyn/Kingston area have established a Health Hub to empower and encourage our community to take more responsibility for their own health and wellbeing. To introduce ourselves we are offering FREE Health Assessments, Information, and Treatments to everyone in our community.

Services offered include:

Medical check-ups and assessments B/P, blood sugar, eye test etc.

Mental and Emotional Health Check-ups

Chronic conditions addressed with natural therapies

Spiritual health

Nutrition and healthy options

Some of our health modalities either offered on the day or contacts available include:

Detox assistance with Ionic Foot Spa and Supervision of Liver and Gallbladder Cleanse.

Client-centred practical and emotional support to people during grief, adjustment, anxiety and depression etc.

Tennant biomodulator and transducer, PEMF devices, which diagnose areas of low energy in the body and treat these areas using frequencies to increase the voltage in the cells and help the body to heal itself.

Fusion Massage- scalp, foot and back massage including joint mobilisation and breath work.

Reflexology foot massage

Bach Flowers Therapy

Emotional rebalance for Musculoskeletal, Cardio-vascular, Respiratory challenges.

Lowered immunity, vaccine injury assistance.

Quantum Healing Hypnosis Technique and Rapid Transformational Therapy - rapidly finds root causes of any problem

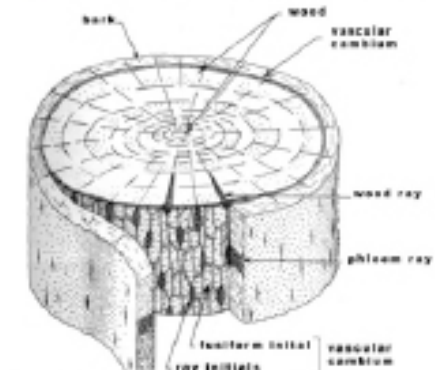
Bowen Therapy for body pain

Bodywork for sports injuries, stress, relaxation. Alignment checks.

Myofascial release -trigger points and posture, deep tissue, needling, cupping etc.

Wellness coaching and nutrition.

Reiki



BROOKLYN
0800 4 TREE DR.
971 8583
www.livingplanet.co.nz



The top photo shows the Brooklyn Service Station in 2001, shortly after the vehicle workshop was replaced with a Four Square superette. Arthur Dodd owned the site from 1975 to 2005, at times running the business and other times leasing the site out. In 2001 Arthur and his daughter, Julie Seevens, were running the Caltex Service Station and added the Four Square, the business was then known as Caltex Brooklyn Four Square. After selling the site and business in 2005 it was later rebranded to BP and the Four Square was disbanded. Note the change in petrol and diesel pricing over the past 22 years!

2001 Photo Credit: Arthur Dodd

2023 Photo Credit: Euan Harris

what's on at your BROOKLYN COMMUNITY CENTRE

18 Harrison Street

WEEKDAYS

**BEFORE SCHOOL
AFTER SCHOOL
HOLIDAY** **CHILDCARE
PROGRAMMES**

Contact Adam Hendry, Childcare Programme Manager. Phone 385 0089 or email childcare@brooklyncommunitycentre.org.nz.

MONDAY

9 AM PILATES

Contact Faye Tohbyn on 022 054 2369 or fayetohbyn@gmail.com

10:30 - 11:30 AM FELDENKRAIS

Improve your movement, posture & breathing. Contact Toni McWhinnie on 021 1782056 or email temcwhinnie@gmail.com

6 - 7:30 PM BROWNIES

Contact Margaret 389 3028 or email marrexj@gmail.com

TUESDAY

9 AM - 12 PM TABLE TENNIS

Open to all ages and ability. Tables, bats and balls provided. Contact Philip on 934 7445 or email: codwgpdl@gmail.com

6:30 - 8 PM ST JOHN CADETS

During school terms. For details contact Ross Young on 021 264 0440 or email ross.young@stjohn.org.nz

WEDNESDAY

10 - 11 AM FELDENKRAIS

Contact Toni McWhinnie on 021 1782056 or email temcwhinnie@gmail.com

5:30 - 7:30 PM KARATE

Grasshopper Karate to Advanced Karate classes. Book your free trial class. Contact Sensei Patricia at www.familyfitkarate.co.nz/contact or 027 297 6049.

7:30 - 8 PM CARDIO & CORE

A 30-mins strength workout for busy people like you! Contact Patricia at www.familyfitkarate.co.nz/contact or 027 297 6049.

WEDNESDAY

8 PM TABLE TENNIS

Inquiries Philip on 934 7445 or email: codwgpdl@gmail.com.

THURSDAY

10 AM - 12 PM CRAFT CONNECTIONS

Fortnightly crafters social group. Contact Louise email: louisebrockway.nz@gmail.com

10 - 11:30 AM KANGATRaining

Post natal classes for new mums and their babies with Hannah Foley. Email hannah@kangatraining.co.nz

5 - 6:30 PM KARATE

Beginners' to Advanced Karate classes. Contact Sensei Patricia at www.familyfitkarate.co.nz/contact or 027 297 6049.

6:30 - 7:30 PM TAI CHI

Contact Ferne on 389 1433 or email: ferne.david@xtra.co.nz

FRIDAY

9 AM PILATES

Contact Faye Tohbyn on 022 054 2369 or email: fayetohbyn@gmail.com

11 AM - 2 PM FRIDAY CIRCLE

Seniors Social Group, meets weekly for light lunch and activities. Contact Euan Harris, details at bottom of page

SATURDAY

9 - 10 AM DANCE CLASSES FOR CHILDREN

Pre-school fun classes and Ballet & Jazz classes for 5 - 8 years. Contact Debbie at info@db4dance.co.nz

12 - 4 PM QUARTERLY MARKETS

Next Brooklyn Market on Saturday 18 March from 12pm to 4pm. Email: market@brooklyncommunitycentre.org.nz to book your stall.

SUNDAY

9:15 AM BROOKLYN ANGLICANS

Our one hour service starts in the hall at 9:30am. Contact Rev. Scottie Reeve at scottie.reeve@gmail.com View online www.brooklynanglicans.nz

10 AM - 1 PM EKKAALLAM CHURCH

Tamil Christian worship and service. Contact Robert tec.wgtn@gmail.com or 027 858 9916

5 - 7 PM KARATE

Grasshopper Karate to Advanced Karate classes. Contact Sensei Patricia at www.familyfitkarate.co.nz/contact or 027 297 6049.

To book Brooklyn Community Centre for classes, groups or events contact Euan Harris on 384 6799 or coordinator@brooklyncommunitycentre.org.nz

TWO TODMAN

Kia Ora neighbours. It's been a little while since we have done a Tattler update so it's great to share some of what's been happening in our spaces and exciting things ahead.

For those who don't know, Two Todman is comprised of four spaces: a Community Room that's used for all sorts of things, from exhibitions and gigs, to meetings and training sessions; a Thrift Shop; Co-Working Office; and a Chapel.

We wanted to kick off with some exciting news; Two Todman is adding a REFILL STATION to our store!! We are so excited about this and the feedback we have received so far has been overwhelmingly positive. This will look like a selection of bulk household products (think laundry detergent, dish liquid, household cleaners and personal hygiene products) for you to come and refill! Stay tuned on our social media for the opening date and we look forward to helping you fill your home with more sustainable household products.

2022 ended with some highlights, including a Christmas Market, such a fun evening. We loved hosting the amazing bunch of very talented, local artisans. It has been cool to display some of their products into our shop too! We hosted a number of Art exhibitions, these are always a highlight here as they bring so much life into the space. Coming up in March we have two new exhibitions, new local Brooklyn Resident Jesse Sherlock with his photography series 'Bathroom', and Ensun Jeong exhibiting 'Moments'.

We kicked off 2023 with a refresh for our Chapel, the new lick of paint is looking so fresh! Under the guidance of local interior designer from Homes with Soul, we will be working on updating this space over the next wee while. This room has seen baptisms, tangi, meditation groups, worship times, and 7am prayer gatherings, so it is nice to give the space some love to prepare for the coming year.

After all the closures due to the roadworks, it's great to have the Op Shop back up and running at full capacity. We've had a couple new volunteers join the team and heaps of donations over summer, so pop in and say hi. Make sure to come along to our next Rummage Sale! We love a good bargain and you are sure to find something there with everything just \$2.00.

Our Co-working office has welcomed some additional co-workers. It is a great hub for locals to work remotely, and a lovely community of people to connect with and work alongside. There are still some spaces available, from daily hot desks to more permanent desks, so if you are sick of working from home in your PJ's please do reach out!

If you would like to get involved in any way we would love to connect. Keep up-to-date via our Facebook and Instagram pages. We are so looking forward to all 2023 brings and are excited for some fresh projects we are working on behind the scenes.

Maggie

Two Todman Community Worker

RECYCLING STATION AT THE COMMUNITY CENTRE

We are super excited to have now set up a small recycling station here at the Brooklyn Community Centre. Some of you will know we have been accepting liquid paperboard (Tetra Paks and similar) – currently we are the only drop-off point in Wellington – and household batteries since late last year. Now we have added to this with items that we can take to the Sustainability Trust to save you having to do so – and hopefully stop a few more things from entering the landfill.

The recycling station is in the foyer outside the main office – to the left as you enter the main door to the building.

The full list of items we can accept are:

Liquid paperboard (Tetra Pak and similar)

Lithium ion (e.g. rechargeable batteries) - Please tape lithium battery terminals prior to dropping off

Nickel cadmium/alkaline batteries: AA, AAA, 9V, C, D, N

Zinc air (e.g. camera batteries)

Silver zinc (e.g. laptop and hearing aid batteries)

Other household batteries

Mobile phone batteries

Metal jar lids

Number 2 and number 5 plastic lids (please keep them separated)

Small metal items (e.g. drink bottles, clothes hangers, kitchen utensils)



Photo Credit: Julie Seevens



worth preserving. (The biggest 100 year old kohekohe is behind Celia Wade-Brown's seat.) The area was finally gazetted as a reserve in 2014. Originally, the south facing slopes were covered in pines but in 2013 a severe storm rendered them in danger of falling and they were removed by Wellington City Council, who then replanted the area in natives. While S.E.A. look after the southern area of Tawatawa, from the parking area in Murchison Street to the ridgeline and the 'monument', the reserve extends northwards to include the areas planted by Friends of Owhiro Stream. The monument is a pou whenua by carver Matahi Avauli Brightwel, which has recently been restored by him and his daughter Tupuruariki Brightwell, depicting ancestors Te Rauparaha and Rangihatea

Janet Campbell
for Friends of Owhiro Stream
Email: owhirosteam@gmail.com

The recent shocking floods have been a big wake-up call into how we manage our whenua. Hopefully, it will lead to some serious re-thinking and effective legislation about things like draining wetlands and building on flood plains. But - remember that Cyclone Bola led to mass planting of pines as a solution. Have we learnt anything? Will we do better this time? In the meantime, our thoughts are with those who have lost their homes and livelihoods.

In sunny Wellington meanwhile, life continues as normal. One Sunday last month I joined a Forest and Bird group for a pleasant walk around Tawatawa Reserve to see if I could learn something about this area on our doorstep. This reserve has been looked after by the currently very active Southern Environmental Association (S.E.A.) for thirty years. In the 1990s there was a proposal to develop this land for housing, which was strongly opposed by locals and Robert Logan, founder of S.E.A. Opposition was strengthened by the discovery of remnant kanuka and kohekohe forest, now 100 years old. Not a lot, admittedly - but any old forest is

CARPETECH

CARPET MAINTENANCE

	carpet repairs
	pet damage
	ripples removed
	stains patched
	free quotes

BROOKLYN

(04) 385 4085 carpetech@me.com
021 434 232 www.carpetech.co.nz

ROSEY'S BLOOMING CUTE

Rosey by any other name would be as sweet.



Rosey came to the CPW shelter because she was feeling very anxious in her home. There were lots of neighbourhood cats and noisy builders next door which was upsetting her.

Rosey is a gentle girl who loves to chat. She isn't very loud but she chirps and chatters a lot, which we find very adorable. She's a big fan of warm laps and likes to be picked up for cuddles when she's in the mood.

Rosey's favourite thing is when you change the sheets on your bed – she likes to get in there as you're making it. However, she is scared of the vacuum cleaner and dogs. She loves to climb trees and is a bit of a hunter,

so needs to be homed away from wildlife sanctuaries.

Rosey will be happiest in an adult home with some safe outdoor access in a quiet neighbourhood that doesn't have many cats.

There's more about Rosey and all our other cats at catsprotectionwellington.org.nz. Follow us on Facebook, Instagram and YouTube for pictures, stories and videos of cats in our shelter.

12-4pm
18 March

SOAP Crafts & Jewellery
Herbal & Fruit teas
Resin art & gifts
Natural skincare products
Vegetables
Relish & Chutneys
Cactus & Succulents
Homemade Goodies
Pies & Toasted Sandwiches
Sausage sizzle
Knife sharpener
Brooklyn Scouts fundraiser
Brooklyn Playcentre Open Day

Brooklyn Community Centre

A. 18 Harrison Street, Brooklyn, Wellington 6021, New Zealand
P. 04 384 6799
E. market@brooklyncommunitycentre.org.nz
W. brooklyncommunitycentre.org.nz



brooklynresourcecentre@gmail.com

The BRC Charitable Trust is pleased to announce its first funding cycle for 2023. Applications open 1 March and close 31 March. The Trustees meet in the middle of next month and applicants should receive notification of an outcome late April.

Any not-for-profit community organisation, group, or incorporated charity that provides an activity, programme, or service for the benefit of people in the wider Brooklyn area can apply (with a maximum funding of \$5,000 for each project).

In 2022 the following groups/ organisations received funding: Brooklyn Community Association, Brooklyn Geckos Hockey Club, Brooklyn Northern United Junior Football Club, Brooklyn School, Ridgway School, St Bernard's School, Upstream Friends of Central Park, Vogelmorn Community Group and Whanāu Manaaki Brooklyn Kindergarten.

To apply for a grant from The BRC Charitable Trust, applicants can request funding information by email at: brooklynresourcecentre@gmail.com. An application form and guidelines will be emailed by the secretary. Please post your application form and supporting documentation back. If you're unsure whether you are eligible to apply for funding, please contact us (on email above) to discuss your project.

The BRC Charitable Trust

How to prepare your Used Beverage Cartons for recycling at save

- 1** Cut along the top and sides of the carton
**Note: leave the Cap attached*
- 2** Completely open up the carton
- 3** Rinse clean. Job done!

Tetra Pak
PROTECTS WHAT'S GOOD

Friday Circle
SOCIAL GROUP FOR SENIORS

Brooklyn Community Centre
11am - 2pm Fridays

Tea/coffee on arrival
Light lunch

Activities include:
gentle exercise, guest speakers, quizzes, bingo and movies

CONTACT EUAN FOR DETAILS

Brooklyn Community Centre
A. 18 Harrison Street, Brooklyn, Wellington 6021, New Zealand
P. 04 384 6799
E. coordinator@brooklyncommunitycentre.org.nz
W. brooklyncommunitycentre.org.nz

BROOKLYN NORTHERN UNITED JUNIORS

Brooklyn Northern United Junior Football Club (BNUJFC) is preparing for a new 2023 Winter season, starting on 29 April.

The club offers football for players beginning at five or six with the First Kicks programme and continues for ages up to 14 with Girls Only on Sundays and Mixed (boys and girls) on Saturday mornings.

First Kicks is a great introduction to football. The sessions run on Sunday mornings from 9am to 10am at Tanera Park and players are welcome to join up during the season. The fees for the season are just \$40 and all players get a smart red club t-shirt to look the part.

From age seven upwards players are formed into teams, have a weekly coached practice and a game each weekend. The club also offers an additional weekly training session for those keen to enhance their skills development. These sessions are coached by professional coaches and are made available

to BNU players through our Alliance with the Wellington United Club.

We follow the guidelines set by NZ Football (refer :<https://www.nzfootball.co.nz/juniors>) by focusing more on enjoyment and appropriate level of play for Juniors.

Our Open Day is Sunday 12 March at the Vogelmorn Green (Bowling Club). See you there between 1-3pm for a good kickaround, sausage sizzle and a boot swap to help get players ready for the upcoming season. Our registrations for the season are now open, so if you are keen to be join our community football club check out our website - <https://www.bnufc.co.nz/> You can also order our very popular club hoodie on-line and you can enjoy the fun with your own personalised wording (eg. Call me Messi). Come and be part of the beautiful game!



VOGELMORN PRECINCT



vogelmornbc@gmail.com
<https://vogelmorn.nz/>

Re-imagining Toi Pōneke - Running spaces to sustain practice Thursday 9 March from 5pm - 7pm at Vogelmorn Upstairs

Toi Pōneke Arts Centre's lease renewal term is due in 2025, so now's the perfect time to think about what a more accessible, inclusive arts centre model, which meets the needs of diverse communities, could look like. Wellington City Council have already spoken with the Toi Pōneke community and now they would love to hear from the wider Wellington creative sector through an online survey and at a series of five interactive talks, one of which will be held at Vogelmorn Upstairs on Thursday 9th March! The discussion at Vogelmorn will be led by Leilani Sio, Nina Nawalowalo, and Sam Donald and will centre around the question - in a city where real estate is expensive, how do you sustain your art practice and practitioners? Come along to hear from creatives whose space is supporting their mahi. This is a free event and all are welcome.

Thompson Springs (Chicago) with Rachel Andie Friday 17 March, Bar from 3pm, Gig from 6pm at Vogelmorn Upstairs

Chicago's Thompson Springs stops in Wellington promoting their new single, *Outta Range!*

PBS called the band "a mix of indie folk with a southern/western feel," and Detroit Public Radio (WDET) noted that they pull influences from classic songwriters, like Tom Petty, to more recent indie artists, like Kurt Vile. Thompson Springs started working with Wilco's Pat Sansone for their debut album, *Undertones*, which they released on the band's own label, *Dropped Beauty Recordings* in 2021. Joined by the incredible, Rachel Andie performing solo, this will be a night you won't want to miss. Tickets and more info coming soon!

Vogelmorn Open Mic Night Thursday 23 March, Bar from 3pm, Music from 6pm at Vogelmorn Upstairs

Join us for Vogelmorn's Open Mic Night! Known for its emphasis on songwriting and intimate performances, Vogelmorn are excited to open their doors for local talent (far and wide) to grace the "upstairs" in an evening of song and joy. As we do not have a backline at VBC this will be run as a songwriters night as opposed to a jam night (however people are still welcome to play together), You will need to provide your own instrument. Sign-ups will be at the bar. Drinks and kai available from 3pm. Performances begin at 6pm, so be sure to get in early to secure your spot!

JEFFERSON STREET MEMORIES

Near the top of Jefferson Street was Harold Temple White, who lived from 1881 until 1972. He lived at No 17 and was a conductor, music teacher, organist, and composer. He lived with his daughter Judith (who died only quite recently, down Happy Valley). Temple White was the organist and choirmaster to the Wesleyan Methodist Church in Taranaki Street for 46 years. He walked from his Brooklyn home to the city every day, even when he was past 80 years old.

When milk was delivered by horse and cart back in the 1940s, the draft horse would pull the horse cart up two houses then stop. Later, the milkman would call "Up Whinny". One couple living halfway up, the Reids, had three grown up daughters living there and the Misses Reids would wait for Whinny the horse to poo outside their house, then go outside with a shovel and bucket to collect it. One day, they headed off to collect it when they saw the Mainland family opposite their house go out with the same plan in mind. Both used the poo for fertilizer. A large woman living at number 40 was also called Whinny, and when the milkman with his horse rounded the corner from Cleveland Street he would call out to his horse, 'Come on Whinny'. The woman didn't like him saying this.

Jefferson Street, being a steep street, was ideal for trolley racing. Children made their own trolleys using cast iron or old pram wheels. For a really exciting ride, a trolley with steel ball bearing wheels was the fastest, two wheels on the back and one at the front. The ultimate thrill was lying flat, whizzing down the road headfirst.

At the bottom corner of the street was the fruitier, Jiam Ngan, though everyone called him Charlie. He used to get 20lb cases of fruit from the markets and give the local children the ones going off a bit. Sometimes a case of peaches or apricots went off and these were sold to the neighbours at rock bottom prices. Mums would boil the fruit and put into jars. One mum even preserved bananas. The fruit scraps were usually thrown over the fences of neighbours properties, some years later there were small fruit trees around the properties.

Charlie always wore gold bracelets comprising gold sovereigns. He wore these to protect his 'nest egg' for later years. He loved cats, in fact there were cats all round his shop and upstairs where he lived.

Chris Rabey

BROOKLYN BROWNIES, GUIDES AND PIPPINS

brooklyn.brownies@gmail.com
Guides and Pippins
 Kathryn Lawrie 802 5049
Brownies
 Margaret Jones 389 3028

BROOKLYN FOOD GROUP

Local food and community. Working Bees held weekly on Monday evenings from 5:30pm to sunset at the Brooklyn Orchard, end of Harrison Street. thebrooklynfoodgroup@gmail.com or www.facebook.com/BrooklynFoodGroupNZ

BROOKLYN GARDEN CLUB

Meets 1st Wednesday 7:30pm from March to October. New members and visitors welcome. Contact Kathleen Skudder on 027 650 9108 or email: kathleen.skudder@gmail.com

GECKOS HOCKEY CLUB

Years 1-4 and new entrants Fridays 4pm-5:15pm. Years 5-8 Tuesdays 4:15pm-5:15pm. Tanera Park Bowling Club astro turf. Just turn up on practice day http://brooklyngeckoshockey.weebly.com.

LIGHTHOUSE CHURCH

Sundays 11am-12:30pm Ridgway School Hall, 120 Mornington Road. Contact Avia 021 1096457. Email: aavia123@gmail.com Find us on Facebook.

BROOKLYN LOCAL HISTORY GROUP

Next meeting on Saturday 1 April from 2 - 4pm at Brooklyn Library. We'd love your input or queries. Please contact the convenor in case our advertised date or venue changes. Sharon Macintyre 0276344455 sharonmacintyre42@gmail.com

BROOKLYN MAINLY MUSIC

Fun affordable 30 minutes, for parents or care givers to enjoy with their pre-schooler(s). Morning Tea provided.

Wellington Reformed Church

34 Harrison St. Rachel 022 407 9652

BROOKLYN NORTHERN UNITED JUNIOR FOOTBALL CLUB

First kicks enrolments open throughout the season. Email enquiries to info@bnujfc.co.nz or visit us online at www.bnujfc.co.nz

BROOKLYN PLAYGROUP

Fun group for parents & caregivers with preschool children. Meets Tuesdays and Thursdays 9:30-11:30am during the school term at the Korean Church - 184 Ohio Road. Turn up on the day.

BROOKLYN SCOUTS

Scout Hall, Harrison St. Scouting is for boys and girls who love adventure. Keas 5-7 yrs, Cubs 7-11yrs, Scouts 11-14yrs, Venturers

14-18yrs. Financial Support available. Find out more at www.brooklynscouts.org.nz or contact John Morrison on membership@brooklynscouts.org.nz

BROOKLYN SMALLBORE RIFLE CLUB

Ages 14+ Sundays 6.30pm-8pm mid-March to early October at the Royal Tiger Range, 131 Russell Terrace, Newtown. To join contact Dianne Grain on 0274 449 641 d.grain@xtra.co.nz www.bsrc.org.nz

BROOKLYN TABLE TENNIS

9am-12pm Tuesdays and 8pm Wednesdays at Brooklyn Community Centre. We welcome new members of all ages and ability. Tables, bats and balls provided. Phone Philip on 934 7445.

BROOKLYN TOY LIBRARY

The Toy Library is based in the Vogelmorn Precinct at 93 Mornington Road. We have a fantastic range of toys for children aged 0-7 years available to hire. Find us on Facebook or visit our website: brooklyntoylibrary.org.nz

BROOKLYN WALKERS

Meet Monday mornings (except public holidays) outside Brooklyn Library. Phone Deborah 934 2238 or Lindy 027 356 5037.

13 March – Island Bay to Lyall Bay. Start from Island Bay bus terminus at 10:15am.

20 March – Otari Wilton Bush. Catch 9:35am No. 14 bus from Molesworth Street.

27 March – Petone Esplanade. Take 9:48am bus from Wellington Railway Station.

3 April – Buckley Road to Kilbirnie. Catch 10:14am No. 29 bus from Brooklyn.

10 April – Easter Monday Holiday – No walk.

BROOKLYN JUNIOR CRICKET CLUB

At the old Wellington Bowling Club, Tanera Crescent, Brooklyn. More details online at www.bjcc.co.nz

FRIENDS OF OWHIRO STREAM

Working bees on the second Saturday of the month 10am-12:30pm. Contact Martin on 389 8995 or email: owhirostream@gmail.com

PREDATOR FREE BROOKLYN

Hello Kaka, goodbye rats! We're looking for volunteers to host traps on their properties. If you'd like to help email predatorfreebrooklyn@gmail.com

RATA PLAYGROUP

Calm and nurturing place for babies and toddlers 0-3 years to explore, learn and socialise with a parent or family member. Morning sessions available at Capital Montessori, Camrose Grove,

Kingston. montessori.school.nz/playgroup or email rata@montessori.school.nz

THE KUNG FU SCHOOL

Learn Shaolin Kung Fu for self defense and functional fitness. Wellington Swords Club Building, 2 Tanera Crescent, Brooklyn. Contact Rob Young on 021 408 521 or wellington@shaolinkungfu.co.nz www.shaolinkungfu.co.nz

ST JOHN PENGUIN AND YOUTH DIVISION

Penguin Program 6-8 yrs. Karen Don 027 404 6343 Youth Division 8-18 yrs. Ross Young 021 264 0440 www.stjohn.org.nz

TURBINE TALKERS TOASTMASTERS CLUB

Your local chapter of Toastmasters International. Tuesdays 7:15pm-9:15pm fortnightly at the Reformed Church on Harrison St.

Sam Day 022 436 8715, Sylvie 022 197 3610 turbine@toastmasters.org.nz http://6879.toastmastersclubs.org

UPSTREAM – FRIENDS OF CENTRAL PARK

Working Bees from 10am-12:30pm on the last Sunday of the month. Contact Lynne White at all.whites@xtra.co.nz Come along for great conversations, meet new people, delicious morning tea and contribute

to the care of Central Park.

SCRABBLE WELLINGTON

Wednesdays from 7pm upstairs at the Vogelmorn Precinct, 93 Mornington Rd. All abilities welcome! Contact Nick Ascroft on 022 675 1399. Email: nick_ascroft@hotmail.com

VOGELMORN TENNIS CLUB

Welcomes players of all ages and abilities. Join our social, family-friendly club. Club days, competitive play, professional coaching.

vogelmorntennisclub.com call in, or email secretary1vtc@gmail.com

WELLINGTON SWORDS CLUB

By the Tanera Park bowling greens off Tanera Crescent. Contact Vicci Lamb - Head Coach. Phone 970 7496 or email: bishop.lamb@pistingaround.com

BROOKLYN PLAYCENTRE

22 Harrison Street Ages 0 - 6 years Mon to Thurs 9am - 12:30pm. Contact brooklynplaycentrenz@gmail.com or call 027 700 1363.

COMMUNITY POTLUCK

At Two Todman on the last Thursday of the month from 7pm. Everyone welcome. Please bring something to share. Find us on Facebook or visit www.twotodman.org.nz

PIVOTAL

CREATE • PRINT • DELIVER



Offset Print • Digital Print • Prepress • Design • Finishing
100% Wellington owned and operated, and we're pretty proud of it.

04 385 2681 • pivotalprint.co.nz
production@pivotalprint.co.nz